

From the Sir Henry Royce  
**Hooper Body Photos from**  
 Gilbert M Ralph



above: A Hooper 2 door Drop Head Coupe on a 1953 Silver Wraith, WVH37.

Amongst the recent additions to the Archive passed of memorabilia from the South Australian Branch of material from the estates of Charles Wright and John and ink drawings of Rolls-Royce and Bentley motor Rear-view Mirror. Many will recall his impressive body (Bateup) which was distributed at the 1983 Federal R

John was a keen collector of photographs on which and 19 black and white photographs, from Osmond Co (Coachbuilders) Ltd. Rivers, who had joined the c responsible for many of the innovative designs which years Hooper produced some striking body styles for their doors in 1959 - the last body being 10294 which

Here is a selection of photographs from John Bull



above and below: King Feisal of Iraq's Hooper D power operated top - concealed when down Note: the King of Iraq was assassinated by Hoopers to take



above: The 1953 Geneva Show car a Hooper 4 door Drop Head Coupé fitted to a Silver Wraith chassis, WVH74. This car was loaned, by the owner, to Grace Kelly for her April 1956 wedding to Prince Ranier of Monaco. Note the 'Perspex' rear screen.



right: Hooper "Teviot III" Touring Limousine, all metal construction of aluminium alloy. The 1950 Earls Court Motor Show car, a Silver Wraith, WHD91.



above: HE the Governor of Nigeria's, Hooper Laundaulette a 1956 Silver Wraith, ELW55.





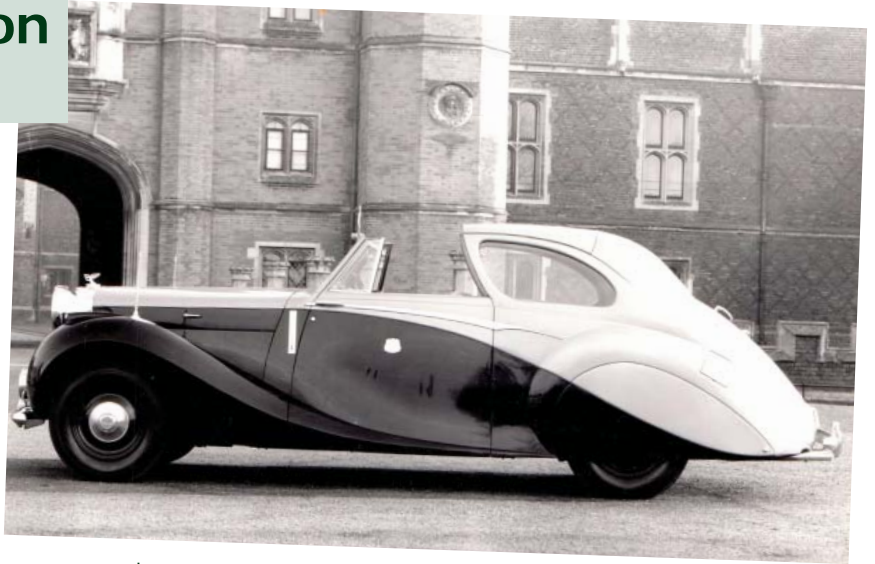
Rolls-Royce Foundation Archives  
**from the John Bull Collection**

Hon. Archivist SHRF

...ion to me by David Forward is an interesting collection  
of the Rolls-Royce Owners' Club. It contains a wealth  
of John Bull. John will be remembered for his superb pen  
cars which have appeared in Præclarvm and In The  
book of drawings (and a selection of cartoons by Ross  
Dally.

...n to base his sketches and in 1967 he received a letter,  
...F Rivers the retired Managing Director of Hooper &  
...company in 1911 became Chief Draughtsman and was  
...n emerged in the Post-World War II period. For many  
...r notable clients around the world. Sadly they closed  
...h was mounted on a Bentley S2.

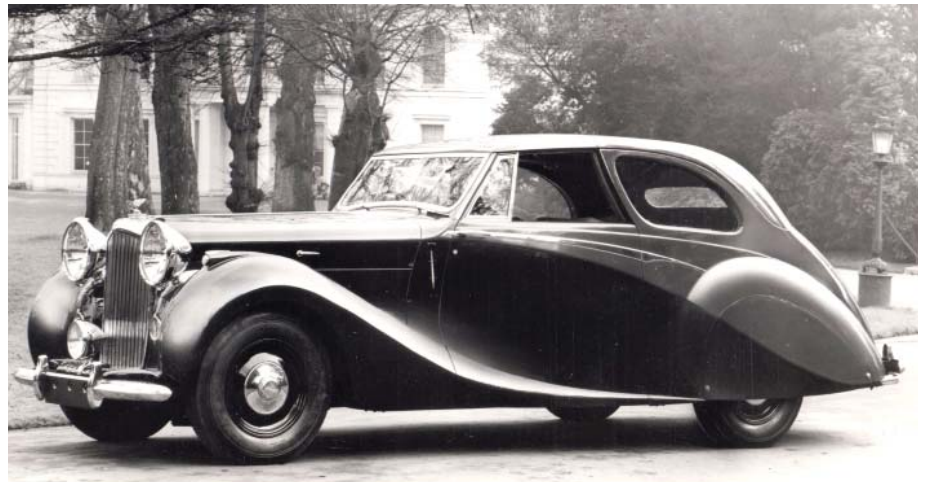
...s collection.



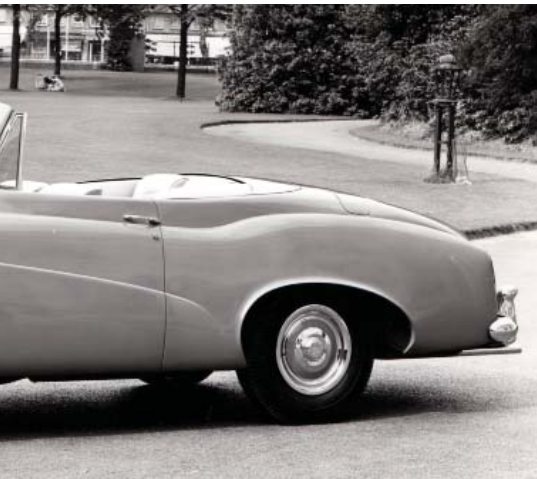
above: H H the Maharajah of Mysore's, Hooper Sedan Coupe,  
1949, Mk VI Bentley, B47EW. Note the Maharajah's crest on the front door.



Drop Head Coupe. Refrigerator in boot for drinks,  
...The chassis is a 1959 Silver Cloud, LSGE252.  
...sinated on the day he was due at  
...delivery of this car.



above: Hooper Sedan Coupé fitted to a MK VI  
1949 Bentley, B175CD.



above: NS Gulbenkian Esq's Hooper Saloon with fixed transparent "Perspex" top. The top  
has "Perspex" ducts with refrigerated outlets and was fitted to 1956 Silver Wraith, LELW74.